

29 Lon Y Mes, Abergele, LL22 7JG

Offers In Region Of £245,000

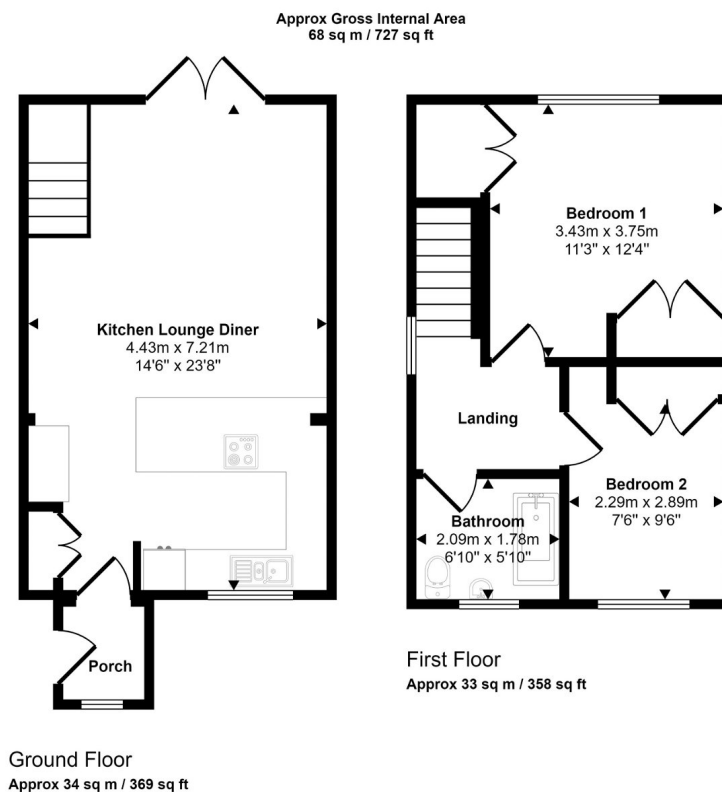
🛏 2 🚿 1 🚗 1



A semi-detached two bedroom house in a must sought after residential position enjoying views towards the coast. The property has been the recipient of extensive refurbishments works and has been totally modernised and improved to high exacting standards. It offers open plan living to the ground floor and stands in neat cottage style gardens with the benefit of a garage. With gas fired central heating, double glazing, underfloor heating, and a log and coal burning stove the property can be described as ready to walk into. It is a rare find and its accommodation comprises :-

Key Features

- Tenure - Freehold
- Double glazing, underfloor heating and multifuel burner stove
- Cottage style gardens
- Coastal views
- Detached garage & driveway parking
- EPC - C
- Ready to walk in to
- Modern open plan living
- Completely refurbished
- Council tax band - C



This floorplan is only for illustrative purposes and is not to scale. Measurements of rooms, doors, windows, and any items are approximate and no responsibility is taken for any error, omission or mis-statement. Icons of items such as bathroom suites are representations only and may not look like the real items. Made with Made Snappy 360.